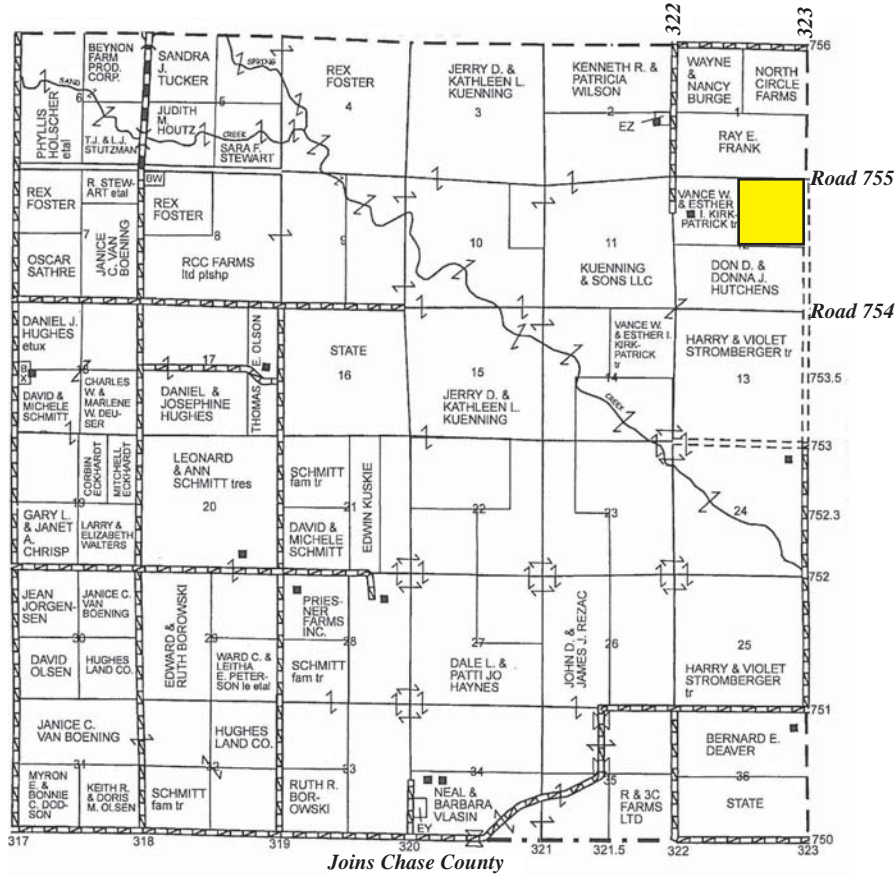


# PERKINS COUNTY LAND FOR SALE

# NE 1/4 12-9-40

160 ACRES  
(M/L)



### Farm Service Agency Information:

NE 1/4 12-9-40:

166 Acres Farmland

156.2 Acres Cropland

156.2 Acres DCP Cropland

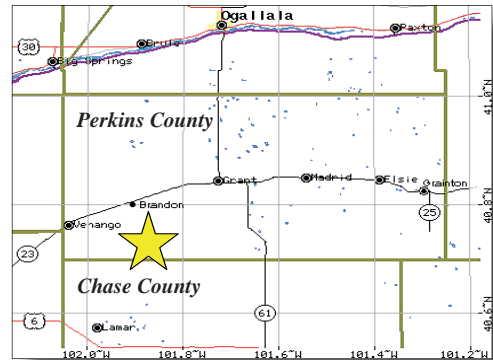
Base Acres Corn: 128.1

Direct Yield: 113

CC Yield: 150

### Irrigation Equipment:

1993 Reinke Sprinkler with  
Electric Motor



# MORELAND REALTY

Agriculture • Real Estate Auctions • Residential • Commercial • Insurance

501 Broadway  
P.O. Box 669  
Imperial, NE 69033

Phone: 308-882-5959

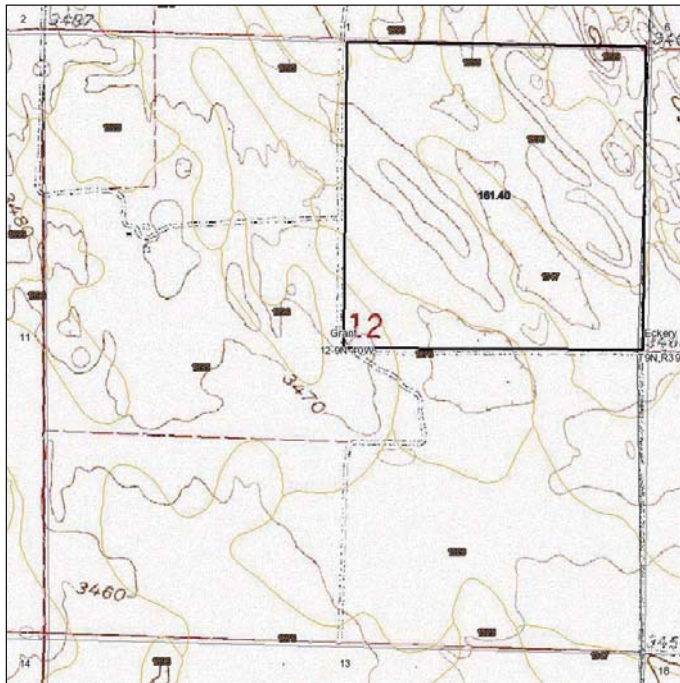
Fax: 308-882-5958

E-mail: [morelandrealty@chase3000.com](mailto:morelandrealty@chase3000.com)

[www.MorelandRealty.com](http://www.MorelandRealty.com)

This information is deemed reliable and Moreland Realty does not warrant its complete accuracy. All figures and measurements are approximate.

### Topography Map



map center: 40° 45' 50.44, 101° 49' 48.64  
scale: 10372

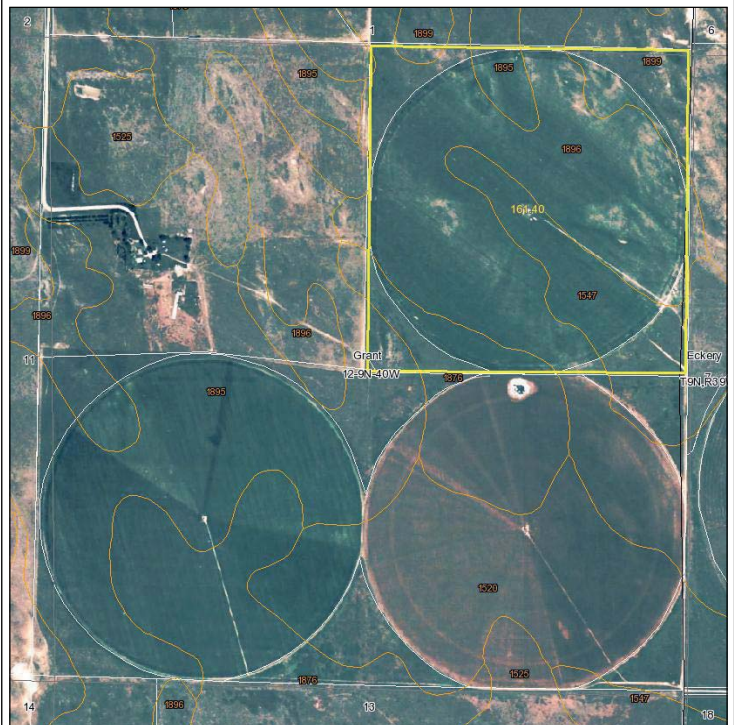
12-9N-40W  
Perkins County  
Nebraska



3/31/2010

Field borders provided by Farm Service Agency as of 5/23/2008. Aerial photography provided by Aerial Photography Field Office.

### Aerial Map



map center: 40° 45' 50.44, 101° 49' 48.64  
scale: 10372

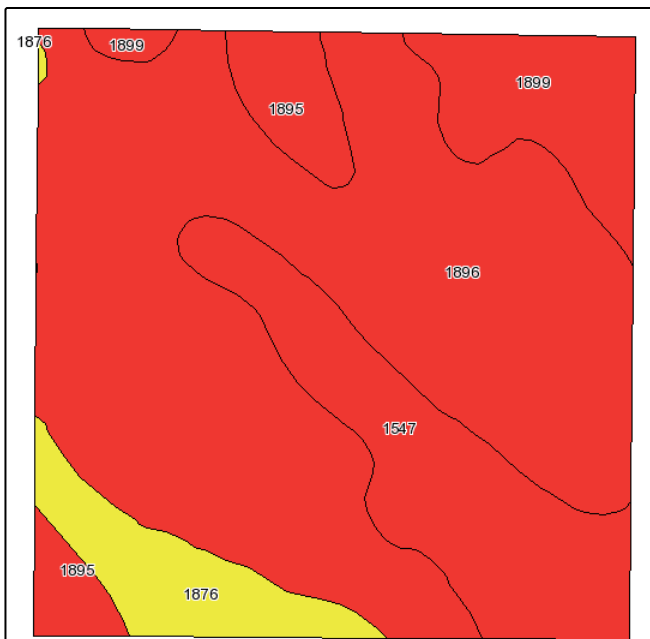
12-9N-40W  
Perkins County  
Nebraska



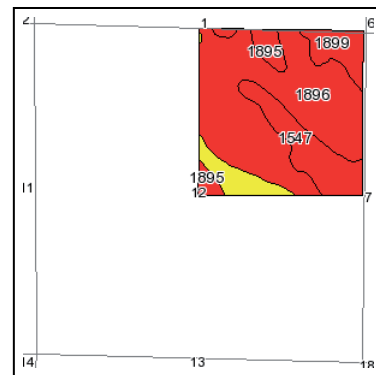
3/31/2010

Field borders provided by Farm Service Agency as of 5/23/2008. Aerial photography provided by Aerial Photography Field Office.

### Soils Map



Fsa borders provided by the Farm Service Agency as of May 23, 2008.  
Soils data provided by USDA and NRCS.



State: **Nebraska**  
County: **Perkins**  
Location: **012-009N-040W**  
Township: **Grant**  
Acres: **161.4**  
Date: **3/31/2010**



Code	Soil Description	Acres	Percent of field	Non-Irr Class Legend	Non-Irr Class	Irr Class	SRPG
1896	Valent loamy sand, 3 to 9 percent slopes	101.6	63.0%		Vle	IVe	23
1547	Dailey loamy sand, 0 to 3 percent slopes	26	16.1%		IVe	IVe	22
1899	Valent sand, rolling	13.6	8.4%		Vle		13
1876	Woody loamy fine sand, 0 to 3 percent slopes	11.3	7.0%		IIIe	IIIe	56
1895	Valent loamy sand, 0 to 3 percent slopes	8.9	5.5%		Vle	IVe	24
<b>Weighted Average</b>							<b>24.4</b>