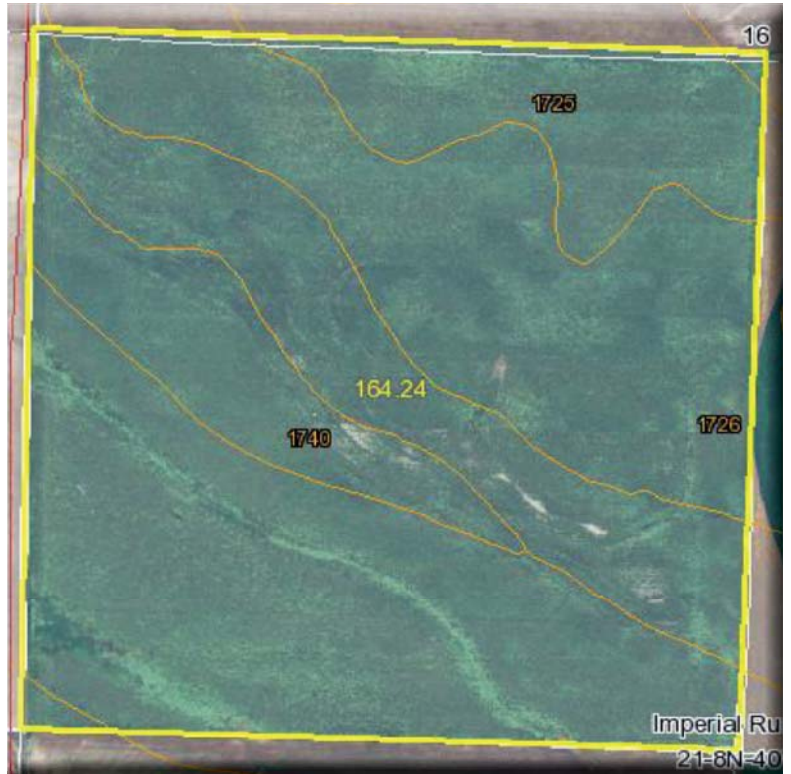


# NW 1/4 21-8-40 CHASE COUNTY

**\$134,480**



Total Acres: 163.7

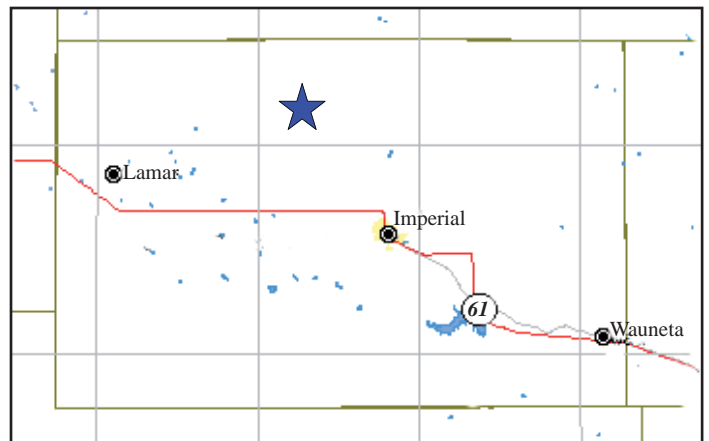
CRP Contract

Through 9/30/2015

CRP Rental:

\$41.68 per Acre

**2009 Taxes: \$902.44**



## MORELAND REALTY

Agriculture • Real Estate Auctions • Residential • Commercial • Insurance

501 Broadway  
P.O. Box 669  
Imperial, NE 69033

Phone: 308-882-5959

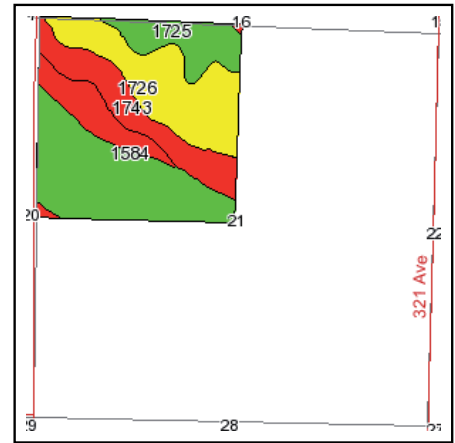
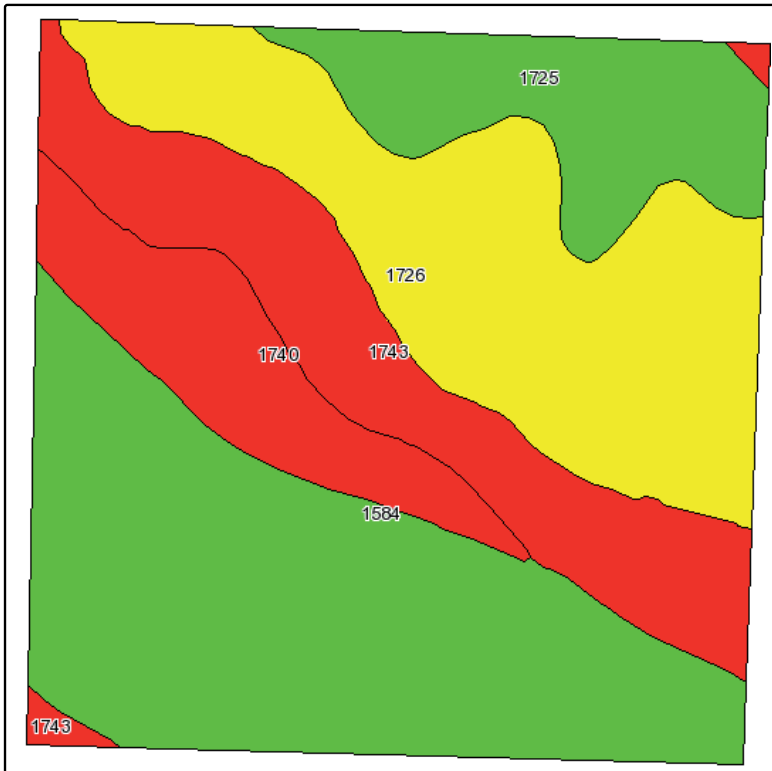
Fax: 308-882-5958

E-mail: [morelandrealty@chase3000.com](mailto:morelandrealty@chase3000.com)

This information is deemed reliable and Moreland Realty does not warrant its complete accuracy. All figures and measurements are approximate.

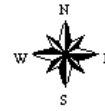
**MorelandRealty.com**

## Soils Map

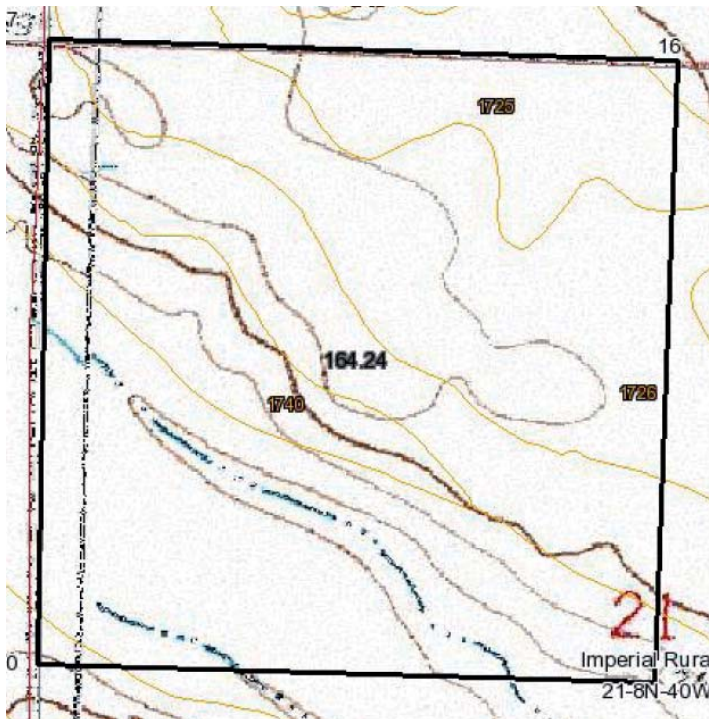


State: **Nebraska**  
 County: **Chase**  
 Location: **021-008N-040W**  
 Township: **Imperial Rural**  
 Acres: **164.2**  
 Date: **11/19/2010**

Fsa borders provided by the Farm Service Agency as of May 23, 2008.  
 Soils data provided by USDA and NRCS.



Code	Soil Description	Acres	Percent of field	Non-Irr Class Legend	Non-Irr Class	Irr Class	SRPG
1584	Goshen silt loam, 0 to 1 percent slopes	56.5	34.4%		Ilc	I	61
1726	Rosebud loam, 1 to 3 percent slopes	43.6	26.6%		Ille	Ille	32
1743	Rosebud-Canyon loams, 6 to 12 percent slopes, eroded	28.7	17.5%		Vs	IVe	19
1725	Rosebud loam, 0 to 1 percent slopes	19	11.6%		Ilc	I	33
1740	Rosebud-Canyon loams, 3 to 6 percent slopes	16.4	10.0%		Vs	Ille	22
<b>Weighted Average</b>							<b>38.8</b>



## Topography Map