

SE 1/4 15-7-35 HAYES COUNTY



\$208,000

Farm Service Agency Information:

160 Acres Farmland
99.4 Base Acres

Wheat: 48 Base Acres,
41 Direct Yield, 41 CC Yield

Corn: 49.2 Base Acres,
48 Direct Yield, 48 CC Yield

Oats: 2.2 Base Acres

2009 Taxes: \$1,171.76

MORELAND REALTY

Agriculture • Real Estate Auctions • Residential • Commercial • Insurance

501 Broadway
P.O. Box 669
Imperial, NE 69033

Phone: 308-882-5959

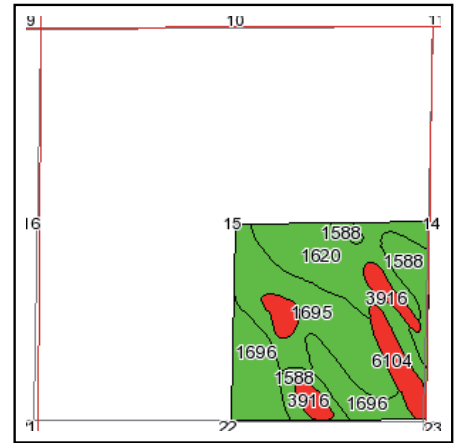
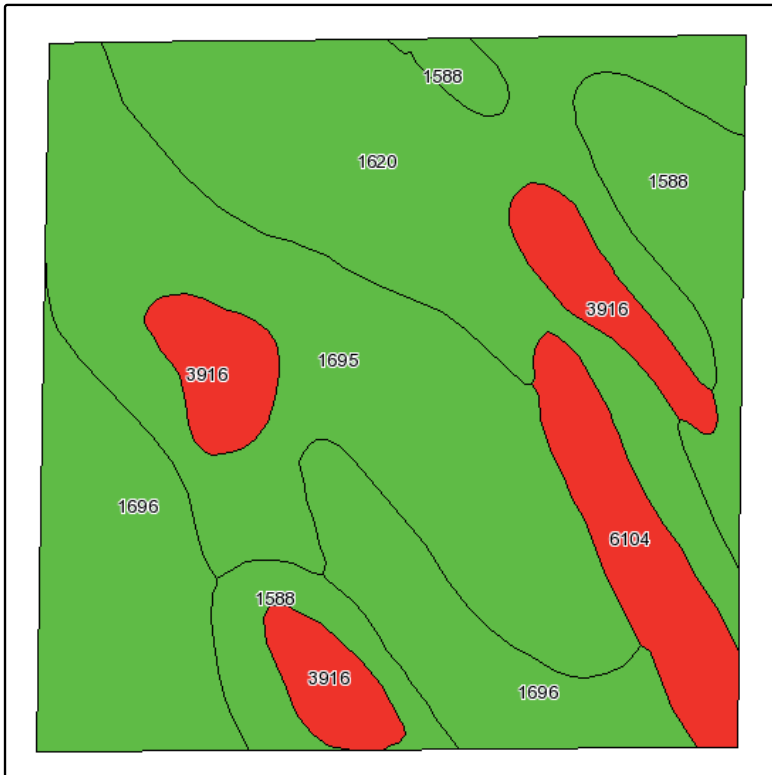
Fax: 308-882-5958

E-mail: morelandrealty@chase3000.com

This information is deemed reliable and Moreland Realty does not warrant its complete accuracy. All figures and measurements are approximate.

MorelandRealty.com

Soils Map

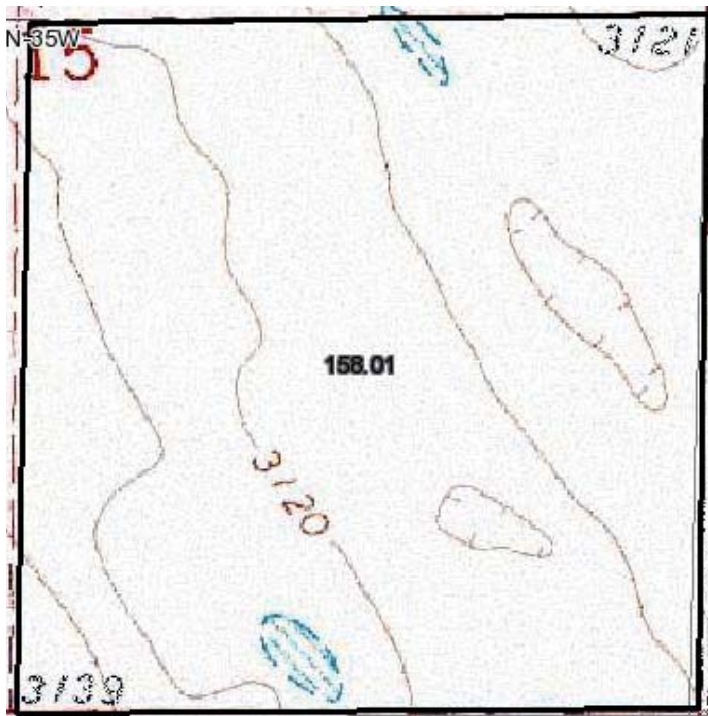


State: **Nebraska**
 County: **Hayes**
 Location: **015-007N-035W**
 Township: **Antelope**
 Acres: **158**
 Date: **10/19/2010**

Fsa borders provided by the Farm Service Agency as of May 23, 2008.
Soils data provided by USDA and NRCS.



Code	Soil Description	Acres	Percent of field	Non-Irr Class Legend	Non-Irr Class	Irr Class	SRPG
1695	McCash very fine sandy loam, 0 to 1 percent slopes	43.9	27.8%		IIc	Ile	66
1620	Keith silt loam, 1 to 3 percent slopes	40.3	25.5%		Ile	Ile	66
1696	McCash very fine sandy loam, 1 to 3 percent slopes	32.3	20.4%		Ile	Ile	64
1588	Blackwood silt loam, 0 to 1 percent slopes	18.9	12.0%		IIc	I	66
3916	Scott variant silty clay loam, frequently ponded	13	8.2%		IVw		13
6104	Sarben loamy very fine sand, 3 to 6 percent slopes	9.6	6.1%		IVe	IVe	49
Weighted Average							60.2



Topography Map